



Los Angeles County Registrar-Recorder/County Clerk

Dean C. Logan
Registrar-Recorder/County Clerk

Official Sample Ballot

General Election
November 3, 2020

VOTE CENTERS OPEN:

October 30 - November 2: 10 AM - 7 PM

Election Day, November 3: 7 AM - 8 PM

***ALL REGISTERED VOTERS WILL
RECEIVE A VOTE BY MAIL BALLOT***

**Vote in the safety of your home
by returning your Vote by Mail ballot**

LAVote.net



Important Election Information

What You Need to Know

You will receive a ballot in the mail for the November 3, 2020 General Election!

To ensure you have convenient, accessible, and safe voting options, we are mailing every registered voter a Vote by Mail ballot.

■ WHEN TO EXPECT YOUR BALLOT

Mailing begins October 5

■ THE VOTE BY MAIL PACKET CONTAINS

- Your ballot card(s)
- A return envelope
- A list of Vote by Mail Drop Box locations
- Your "I Voted" sticker

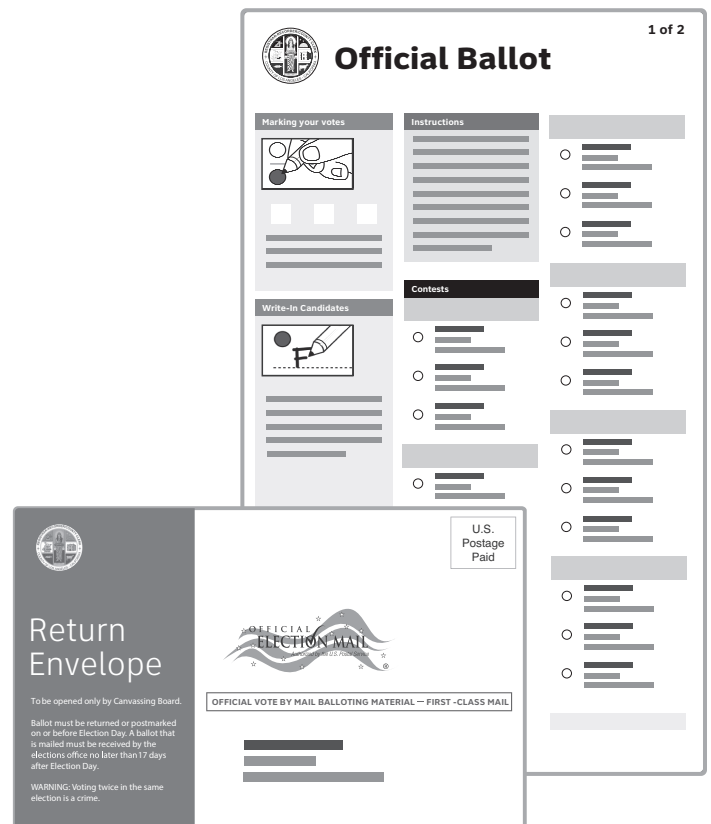
■ RETURN OPTIONS

- United States Postal Service - no postage necessary
- Drop off at any Vote by Mail Drop Box
- Drop off at any Vote Center

■ MULTILINGUAL BALLOTS

We offer ballots in 12 languages (translated ballot guide available in six additional languages)

Call our office to request your multilingual ballot at (800) 815-2666, option 3



Visit LAVote.net or call 800-815-2666 for more information



Information for Voters

Offices on the ballot

November 3, 2020 marks the date for the General Election. In this election, the ballot will include the contest for United States President, contests for Congress, state legislative offices (Senate and Assembly) and various local offices. The ballot also includes statewide and local measures. Presidential General Elections only occur every four years. Review your Sample Ballot and visit **LAVote.net** to make sure you are ready for this election!

Party-nominated offices:

President and Vice President

Voter-nominated offices:

United States Representative
States Senator
State Assembly member

Local offices:

County Board of Supervisors, District 2
District Attorney
Superior Court Judge
Local districts or city contests

Important notice

Voter-nominated offices no longer allow write-in candidates on the General Election ballot. Only the top two vote-getters from the Primary Election move on to the General Election.



Check Your Material

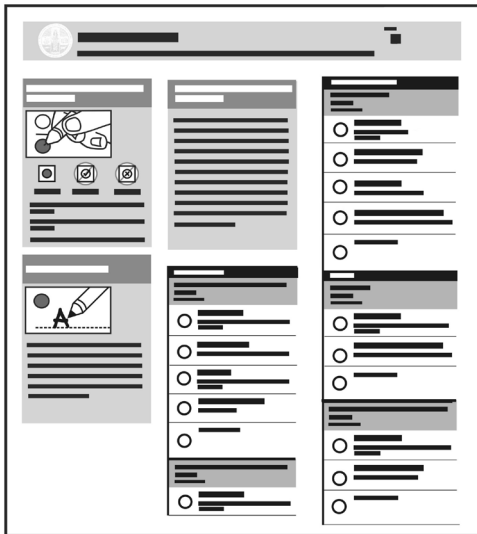
Your Vote by Mail package will contain:

Ballot group numbers on materials **must** match.

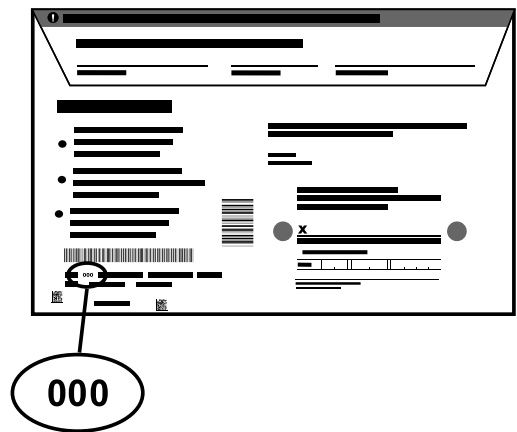
Example: **000**
Ballot Group

If ballot group numbers do not match,
please call **(800) 815-2666, option 2**.

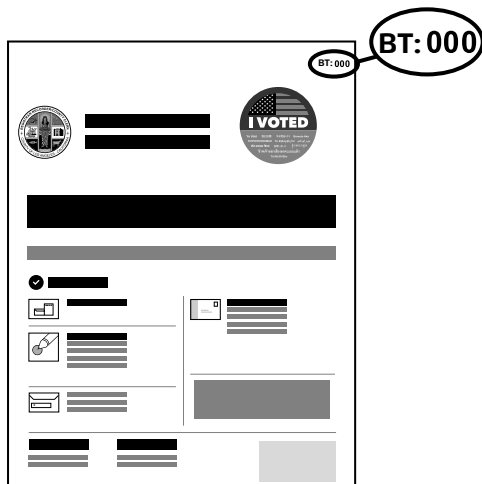
1 Official Ballot Card



2 Ballot Return Envelope



3 Vote by Mail Ballot Wrap



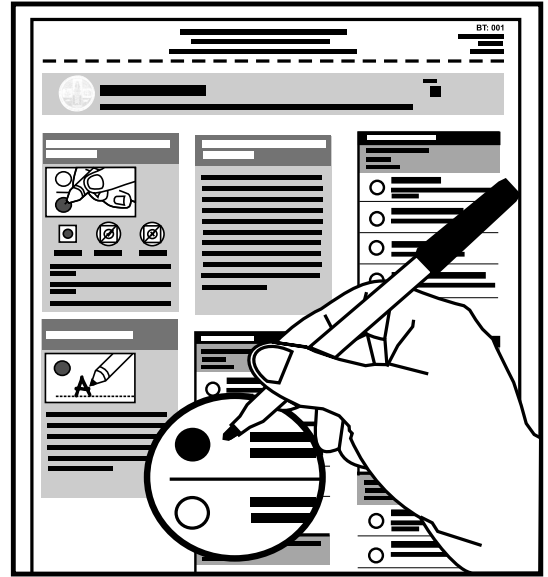


Marking Your Ballot

- Use only **black** or **blue** ink pen to mark your choice on your ballot.
- Fill the entire oval matching your vote choice.
- **Do not** vote for more choices than indicated.
- **Do not** punch a hole through the ballot card.

Misplaced or damaged ballot

- Mark your choice on the Official Sample Ballot page. Insert into Ballot Return Envelope and mail back.
- Call **(800) 815-2666, option 2** to request a replacement ballot before Election Day.



Request your ballot in a different language

L.A. County provides language services in up to 18 languages.

To request your ballot or election materials in another language please call our Multilingual Services Section at **(800) 815-2666, option 3**.



Vote by Mail Return Options

Before You Return Your Vote by Mail Ballot Make Sure:

1. Your ballot is securely placed inside the Vote by Mail envelope.
2. You sign the back of the Vote by Mail envelope.
3. Remember no postage is necessary.

Recommended options for returning your Vote by Mail ballot



Return by mail

Must be postmarked by Election Day. No postage required.



Signature Verification

Voters must sign the eligibility oath and date the Vote by Mail return envelope before submitting their ballot. Every signature is verified before the ballot is cleared for counting. If a signature is missing or if the signature does not match the one on file, the County will notify the impacted voter to allow the voter an opportunity to provide a valid signature.



Return at a Vote by Mail Drop Box Location

List of drop box locations available at **LAVote.net** prior to each election.



Drop-off at any Vote Center leading up to and on Election Day

List of Vote Centers available at **LAVote.net** prior to each election.

**For more information,
visit **LAVote.net****

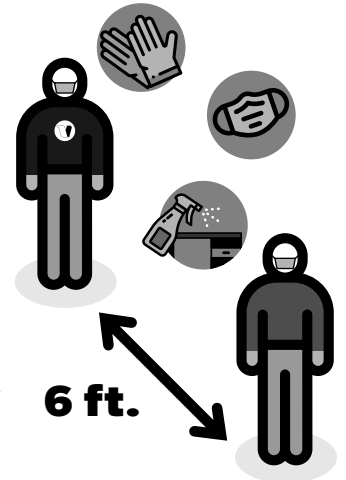


Vote Center Information and Guidance Relating to COVID-19

The Los Angeles County “Safe Presidential Election Plan” aligns with California’s “Election Administration Guidance under COVID-19.” Each was developed in consultation with relevant health authorities using the best public health information available, including guidance provided by the U.S. Centers for Disease Control and Prevention (CDC) and California public health officials.

The Los Angeles Registrar-Recorder/County Clerk (RR/CC) has:

- Developed a voting location-specific protection plan.
- Trained workers on measures to limit the spread of COVID-19, including screening themselves for symptoms and staying home when necessary.
- Established prevention and self-screenings measures for workers.
- Established and communicated physical distancing guidelines.
- Implemented hand-washing, face covering and disinfection protocols.



FOR VOTERS

All registered voters will be mailed a Vote by Mail ballot.

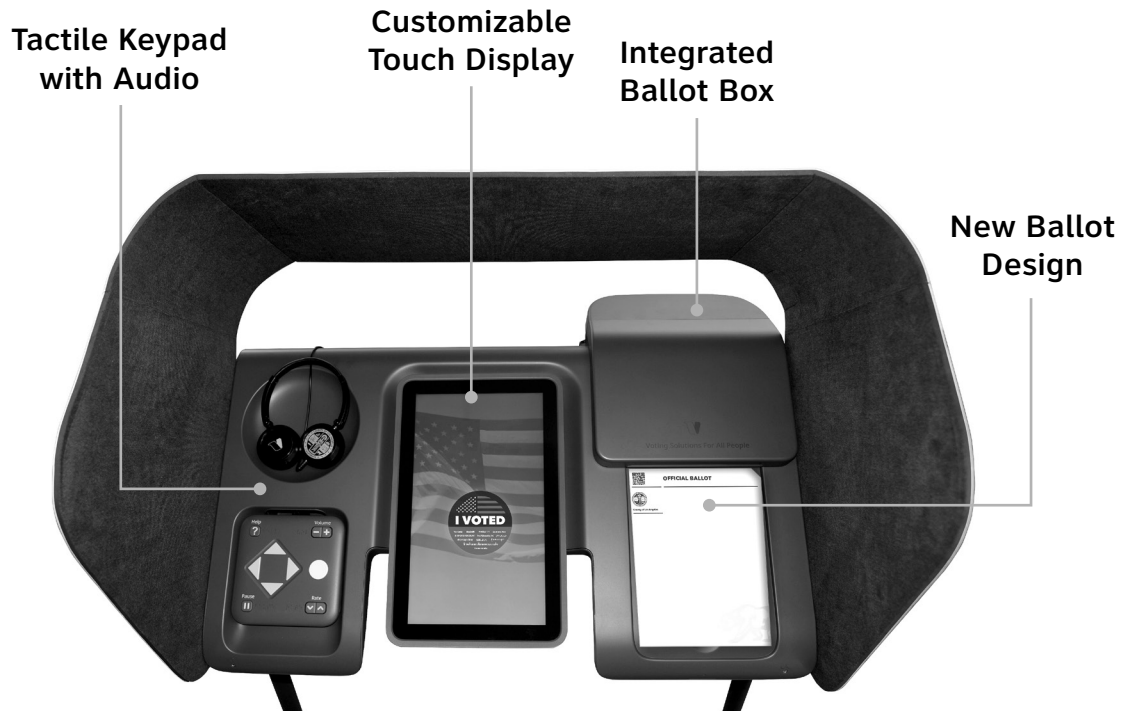
L.A. County encourages voters to stay home and vote using their mail-in ballot. However, for some individuals it is still be preferable to vote in person. Wherever in-person voting is offered, we will follow the State and County’s public health and safety guidance to provide a safe voting environment.

COVID-19 Information for Voting In-Person:

- Voters should wear a face covering while at the vote center or waiting in line.
- Face coverings and gloves will be available for voters if requested.
- Hand sanitizer will be provided upon entry and exit of the Vote Center. Hand sanitizer will also be available at key stations during the voting process.
- Social distancing will be enforced while waiting in line and throughout the check-in and voting process.
- ePollbooks and Ballot Marking devices will be sanitized after every voter.
- Voters will be encouraged to take measures to speed up their election process to limit their time in the Vote Center. This includes verifying voter registration in advance, using the Interactive Sample Ballot (ISB) to pre-mark selections, and bringing their Sample Ballot to speed up the voter check-in.
- Voters will be encouraged to take advantage of early voting and vote at off-peak times if possible.
- Curbside voting will continue to be available for voters who are unable to enter the Vote Center.

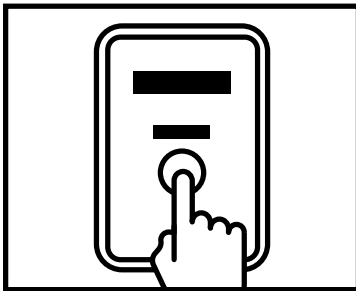


Voting Instructions for Ballot Marking Device

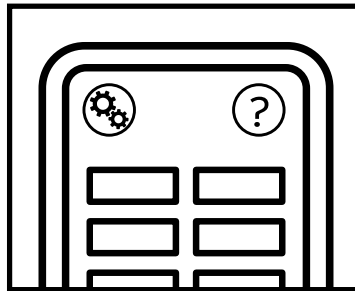


How to vote on the Ballot Marking Device (BMD)

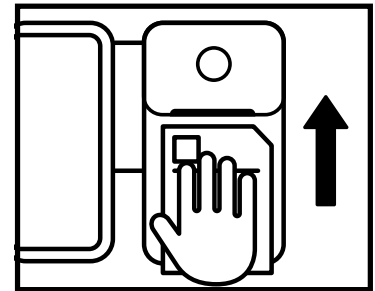
1. Tap to start



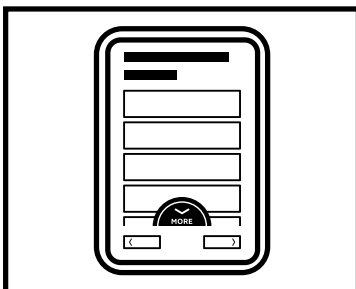
2. Select language



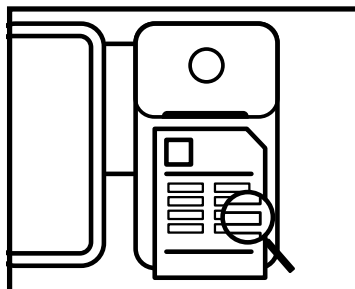
3. Insert ballot



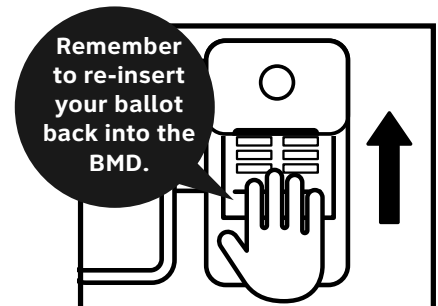
4. Make selections



5. Review selections

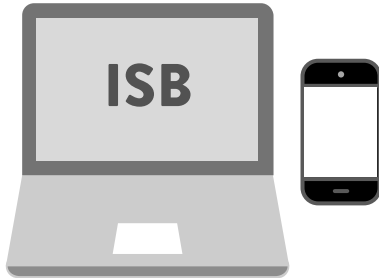


6. Cast ballot





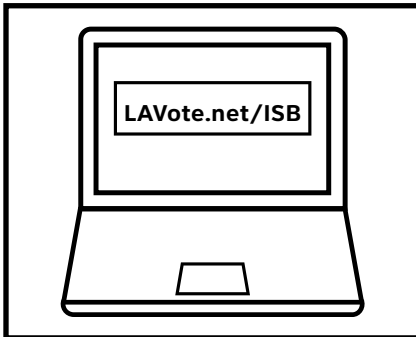
Interactive Sample Ballot



The **Interactive Sample Ballot (ISB)** is a convenient and optional application to speed up the voting experience. Voters can review and mark their selections on a computer or mobile device. Once the voter reviews and confirms their selections, the ISB will generate a Poll Pass. The Poll Pass is then taken to the Vote Center, where the voter will scan their Poll Pass to transfer their selections on to the Ballot Marking Device.

How to use the Interactive Sample Ballot

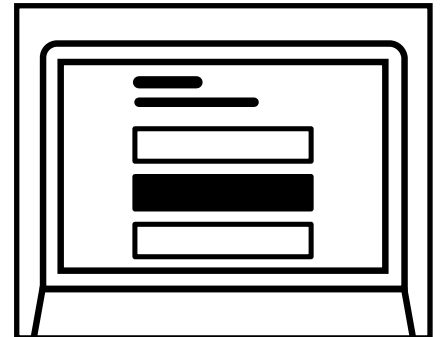
1. Visit LAVote.net/ISB



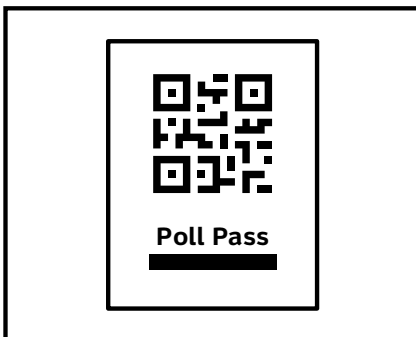
2. Enter your information



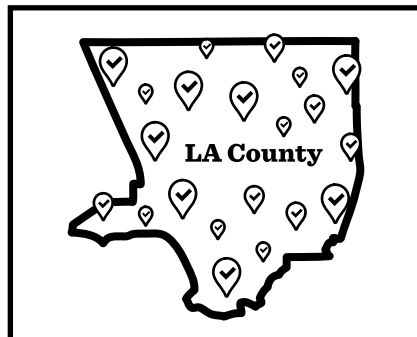
3. Make your selections



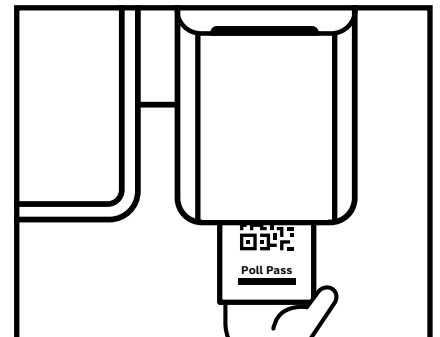
4. Generate a Poll Pass



5. Take to any Vote Center



6. Scan onto the BMD



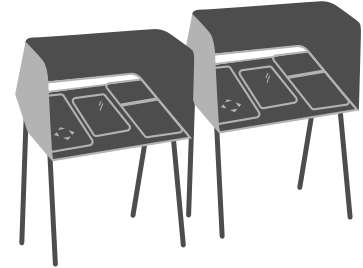


Accessible Voting Options

Los Angeles County is committed to providing all voters a positive, private and independent voting experience. To view the Registrar-Recorder/County Clerk's accessibility services, go to **LAVote.net**.

Ballot Marking Device

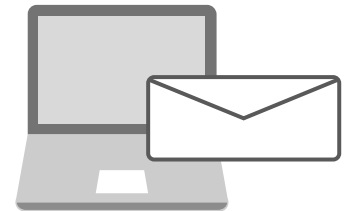
All Ballot Marking Devices are fully accessible and available in all eligible languages.



Accessible Vote by Mail

Voters who need assistance reviewing and marking their Vote by Mail ballot may use the Accessible Vote by Mail application.

Learn more at **LAVote.net/ravbm**.



Curbside Voting



Curbside voting is available at all Vote Centers in Los Angeles County.



Important Telephone Numbers

General information:

(800) 815-2666

Vote Center accessibility:

(800) 815-2666, option 7

CD/Cassette recordings:

(800) 815-2666, option 3

TDD:

(562) 462-2259



Voter Bill of Rights

You have the following rights:

1. **The right to vote if you are a registered voter.** You are eligible to vote if you are:
 - a U.S. citizen living in California
 - at least 18 years old
 - registered where you currently live
 - not currently in state or federal prison or on parole for the conviction of a felony
 - not currently found mentally incompetent to vote by a court
2. **The right to vote if you are a registered voter even if your name is not on the list.**
You will vote using a provisional ballot. Your vote will be counted if elections officials determine that you are eligible to vote.
3. **The right to vote if you are still in line when the polls close.**
4. **The right to cast a secret ballot** without anyone bothering you or telling you how to vote.
5. **The right to get a new ballot if you have made a mistake,** if you have not already cast your ballot. You can:
Ask an elections official at a Vote Center for a new ballot,
Exchange your vote-by-mail ballot for a new one at an elections office, or at your Vote Center, or **Vote using a provisional ballot.**
6. **The right to get help casting your ballot** from anyone you choose, except from your employer or union representative.
7. **The right to drop off your completed vote-by-mail ballot at any Vote Center** in California.
8. **The right to get election materials in a language other than English** if enough people in your voting precinct speak that language.
9. **The right to ask questions to elections officials about election procedures** and watch the election process. If the person you ask cannot answer your questions, they must send you to the right person for an answer. If you are disruptive, they can stop answering you.
10. **The right to report any illegal or fraudulent election activity** to an elections official or the Secretary of State's office.

If you believe you have been denied any of these rights, call the Secretary of State's confidential toll-free Voter Hotline at **(800) 345-VOTE (8683).**

- On the web at **www.sos.ca.gov**
- By phone at **(800) 345-VOTE (8683)**
- By email at **elections@sos.ca.gov**



Translated Election Material

1-800-815-2666 option 3

Call to receive translated election materials, vote center information or assistance with LAvote.net.

Llame para recibir materiales electorales traducidos, información sobre lugares de votación o asistencia con LAvote.net.

請致電索取已翻譯的選舉資料、投票站資訊或與LAvote.net相關的協助。

번역된 선거 자료, 투표소 정보 또는 LAvote.net의 도움을 받으려면 전화하십시오.

Hãy gọi điện thoại để nhận các tài liệu bầu cử đã được phiên dịch, thông tin của địa điểm bỏ phiếu hoặc sự trợ giúp với LAvote.net.

Tumawag para makatanggap ng isinaling mga materyales sa halalan, impormasyon sa lugar ng botohan o tulong sa LAvote.net.

翻訳された選挙資料、投票所情報、またはLAvote.netに関する補助を受けるにはお電話ください。

โทรติดต่อเพื่อรับเอกสารการเลือกตั้งที่แปลแล้วหรือติดต่อสอบถามขอความช่วยเหลือเกี่ยวกับสถานที่เลือกตั้งได้ที่เว็บไซต์ LAvote.net

Позвоните, чтобы получить переведенные материалы о выборах, информацию о месте голосования или помощь с LAvote.net.

សូមទូរស័ព្ទដើម្បីទទួលសៀវភៅនៃការបោះឆ្នោតដែលបានបកប្រែហើយ រួមជាមួយព័ត៌មានទីកន្លែង បោះឆ្នោត ឬជំនួយជាមួយ LAvote.net ។

अनुवादित सामग्री, मतदान स्थान की जानकारी या LAvote.net के बारे में सहायता प्राप्त करने के लिए कॉल करें।

برای دریافت مطالب ترجمه شده انتخاباتی، اطلاعات درباره محل اخذ رای یا راهنمایی در مورد LAvote.net تماس بگیرید.

Հանգստագրե՛ք քարտանված ընտրական նյութեր, ընտրատեղանակների վերաբերյալ տեղեկություններ և LAvote.net-ի հետ կապված աջակցություն ստանալու համար:

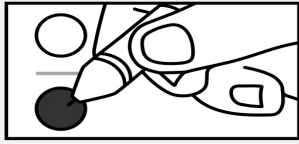
The Federal Voting Rights Act requires voter information, including a Sample Ballot booklet containing a Vote by Mail application be available in English as well as Armenian, Chinese, Khmer, Farsi, Korean, Spanish, Tagalog/Filipino and Vietnamese. Additional languages we support are: Hindi, Japanese, Russian and Thai.



Sample Ballot

General Election
November 3, 2020

Instructions to voters: Marking your ballot



Do this



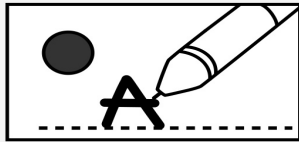
Not this



Not this

- Use only black or blue ink pen to mark your choice on your ballot.
- Fill in the circle to the left of your choice.
- Don't vote for more choices than indicated.
- You don't have to vote in every race.

Write-In Candidates



- A voter is entitled to cast a vote for a qualified write-in candidate for any party-nominated or nonpartisan office by writing, on the write-in portion of the ballot, the name of the qualified candidate.
- To add a candidate, fill in the circle to the left of "Write-in Candidate" and write the name on the dotted line.
- A list of qualified write-in candidates is available eleven days before the election at lavote.net.
- Do not write-in a candidate whose name already appears on the ballot.
- Pursuant to Elections Code 8606, write-in votes are not authorized for voter-nominated offices at the general election.

Voter-Nominated and Nonpartisan Offices

All voters, regardless of the party preference they disclosed upon registration, or refusal to disclose a party preference, may vote for any candidate for a voter-nominated or nonpartisan office. The party preference, if any, designated by a candidate for a voter-nominated office is selected by the candidate and is shown for the information of the voters only. It does not imply that the candidate is nominated or endorsed by the party or that the party approves of the candidate. The party preference, if any, of a candidate for a nonpartisan office does not appear on the ballot.

CITY/LOCAL

ROLLING HILLS ESTATES CITY GENERAL MUNICIPAL ELECTION Member of the City Council

Vote For No More Than **THREE**



TIMOTHY BURESH
Civil Engineer



FRANK V. ZERUNYAN
Incumbent



DEBBY STEGURA
Retired Lawyer



BRUCE STECKEL
Retired Bank Executive



VELVETH SCHMITZ
Mayor



BRIDGET K. CARMAN
Planning Commissioner/
Businesswoman



JEFFREY ROMANELLI
Retired Chief Engineer



Write-In Candidate



Write-In Candidate



Write-In Candidate

PALOS VERDES PENINSULA UNIFIED SCHOOL DISTRICT Governing Board Member

Vote For No More Than **TWO**



JOSEPH E. DILEVA
Educator



JEFF FRANKEL
Business Consultant



AURA IMBARUS
Educator



LINDA D. REID
Incumbent



Write-In Candidate



Write-In Candidate

Continue voting on other side



Sample Ballot

General Election
November 3, 2020

CITY/LOCAL

LOS ANGELES COMMUNITY COLLEGE DISTRICT Member of the Board of Trustees, Seat 1

Vote For **ONE**

- ☐ **TORI BAILEY**
Homelessness Liaison
- ☐ **CHARNÉ TUNSON**
K-12 School Administrator
- ☐ **KAREN HERNANDEZ**
Education Advocate
- ☐ **ANDRA HOFFMAN**
Member of the Board of Trustees,
Los Angeles Community College
District
- ☐ **ANTONIO PAOLO SANCHEZ**
Community Advocate
- ☐ **MARJORIE SHAW**
Business Manager
- ☐ **JESSICA M. MCCARNS**
Student Organizer
- ☐ **R. RICHARD CUEVAS**
Education Consultant
- ☐ Write-In Candidate

LOS ANGELES COMMUNITY COLLEGE DISTRICT Member of the Board of Trustees, Seat 3

Vote For **ONE**

- ☐ **MICHAEL BATIE**
Entrepreneur/Educator
- ☐ **SYLVIA BROOKS GRIFFIN**
Community Volunteer
- ☐ **GERRY ANDERSON**
Community College Professor
- ☐ **LYDIA A. GUTIÉRREZ**
Teacher/Administrator
- ☐ **RUFFIN EUGENE
PATTERSON**
Teacher/Coach
- ☐ **ROBERT PAYNE**
Writer/Researcher/Educator
- ☐ **ANTHONY JOSEPH DANNA**
Data Scientist/Executive
- ☐ **CHATURA DE SILVA**
Non-Profit Project Director
- ☐ **DAVID VELA**
Appointed Member of the Board of
Trustees, Los Angeles Community
College District
- ☐ **SAMUEL PAUL WHITEHEAD**
Education/Veterans Advocate
- ☐ Write-In Candidate

LOS ANGELES COMMUNITY COLLEGE DISTRICT Member of the Board of Trustees, Seat 5

Vote For **ONE**

- ☐ **GLENN BAILEY**
- ☐ **CYNTHIA GONZALEZ**
Teacher/School Principal
- ☐ **NICHELE M. HENDERSON**
College Teacher
- ☐ **PAT STURGES**
Special Education Teacher
- ☐ **SCOTT SVONKIN**
Member of the Board of Trustees,
Los Angeles Community College
District, Seat 5
- ☐ **MICHELLE MANOS**
Homeless Services Provider
- ☐ **SERGIO B. VARGAS**
College Education Advocate
- ☐ **NICHET JAMES-GRAY**
Educator/Academic Dean
- ☐ Write-In Candidate

1 Continue voting on next page



Sample Ballot

General Election
November 3, 2020

CITY/LOCAL

LOS ANGELES COMMUNITY COLLEGE DISTRICT Member of the Board of Trustees, Seat 7

Vote For **ONE**

- ☐ **CORY D. BUTLER**
Professional Athlete/Parent
- ☐ **CHRIS HAN**
Community College Teacher
- ☐ **NANCY PEARLMAN**
Community College Educator
- ☐ **JAMAL K. STEWART**
City Analyst
- ☐ **ARTURO FLORES**
Community Outreach Director
- ☐ **MIKE FONG**
Member of the Board of Trustees,
Los Angeles Community College
District, Seat 7
- ☐ **RAQUEL WATTS**
Legal Advocate
- ☐ Write-In Candidate

MEMBER OF THE STATE ASSEMBLY 66th District

Vote For **ONE**

- ☐ **ARTHUR C. SCHAPER**
Party Preference: Republican
Organization Director
- ☐ **AL MURATSUCHI**
Party Preference: Democratic
South Bay Assemblymember

UNITED STATES REPRESENTATIVE 33rd District

Vote For **ONE**

- ☐ **JAMES P. BRADLEY**
Party Preference: Republican
CEO/Business Owner
- ☐ **TED W. LIEU**
Party Preference: Democratic
Congressman/Military Officer

DISTRICT

WATER REPLENISHMENT DISTRICT OF SOUTHERN CALIFORNIA Member, Board of Directors, Division 2

Vote For **ONE**

- ☐ **JOE L. MACIAS**
Engineer Fitter/Businessman
- ☐ **G. RICK MARSHALL**
Chief Financial Officer
- ☐ **GEORGE URAGUCHI**
Retired IT Director
- ☐ **ROBERT "ROB"
KATHERMAN**
Director, Water Replenishment
District of Southern California
- ☐ Write-In Candidate

PALOS VERDES LIBRARY DISTRICT Member, Board of Trustees

Vote For No More Than **TWO**

- ☐ **BOB NELSON**
Retired Planning Commissioner
- ☐ **ZOE UNNO**
Librarian
- ☐ **KINGSTON WONG**
Incumbent
- ☐ **RAY RANDALL**
Retired
- ☐ Write-In Candidate
- ☐ Write-In Candidate

COUNTY

DISTRICT ATTORNEY

Vote For **ONE**

- ☐ **JACKIE LACEY**
Los Angeles County District Attorney
- ☐ **GEORGE GASCÓN**
Justice Reform Advocate
- ☐ Write-In Candidate

JUDGE OF THE SUPERIOR COURT Office No. 72

Vote For **ONE**

- ☐ **STEVE MORGAN**
Deputy District Attorney, County of
Los Angeles
- ☐ **MYANNA DELLINGER**
Law Professor/Attorney
- ☐ Write-In Candidate

JUDGE OF THE SUPERIOR COURT Office No. 80

Vote For **ONE**

- ☐ **DAVID A. BERGER**
Deputy District Attorney, County of
Los Angeles
- ☐ **KLINT JAMES MCKAY**
Administrative Law Judge, California
Department of Social Services
- ☐ Write-In Candidate

! Continue voting on other side



Sample Ballot

General Election
November 3, 2020

COUNTY

JUDGE OF THE SUPERIOR COURT
Office No. 162

Vote For **ONE**



DAVID D. DIAMOND

Attorney/Law Professor



SCOTT ANDREW YANG

Deputy District Attorney, County of
Los Angeles



Write-In Candidate

J COUNTY MEASURE J

Vote **YES** or **NO**

COMMUNITY INVESTMENT AND ALTERNATIVES TO INCARCERATION MINIMUM COUNTY BUDGET ALLOCATION. Shall the measure, annually allocating in the County's budget no less than ten percent (10%) of the County's locally generated unrestricted revenues in the general fund to address the disproportionate impact of racial injustice through community investment and alternatives to incarceration and prohibiting using those funds for carceral systems and law enforcement agencies as detailed in the ordinance adopting the proposed charter amendment, be adopted?



YES on Measure J



NO on Measure J

STATE

14 STATE MEASURE 14

Vote **YES** or **NO**

AUTHORIZES BONDS CONTINUING STEM CELL RESEARCH. INITIATIVE STATUTE. Authorizes \$5.5 billion state bonds for: stem cell and other medical research, including training; research facility construction; administrative costs. Dedicates \$1.5 billion to brain-related diseases. Appropriates General Fund moneys for repayment. Expands related programs. Fiscal Impact: Increased state costs to repay bonds estimated at about \$260 million per year over the next roughly 30 years.



YES on Measure 14



NO on Measure 14

15 STATE MEASURE 15

Vote **YES** or **NO**

INCREASES FUNDING SOURCES FOR PUBLIC SCHOOLS, COMMUNITY COLLEGES, AND LOCAL GOVERNMENT SERVICES BY CHANGING TAX ASSESSMENT OF COMMERCIAL AND INDUSTRIAL PROPERTY. INITIATIVE CONSTITUTIONAL AMENDMENT. Taxes such properties based on current market value, instead of purchase price. Fiscal Impact: Increased property taxes on commercial properties worth more than \$3 million providing \$6.5 billion to \$11.5 billion in new funding to local governments and schools.



YES on Measure 15



NO on Measure 15

16 STATE MEASURE 16

Vote **YES** or **NO**

ALLOWS DIVERSITY AS A FACTOR IN PUBLIC EMPLOYMENT, EDUCATION, AND CONTRACTING DECISIONS. LEGISLATIVE CONSTITUTIONAL AMENDMENT. Permits government decision-making policies to consider race, sex, color, ethnicity, or national origin in order to address diversity by repealing constitutional provision prohibiting such policies. Fiscal Impact: No direct fiscal effect on state and local entities. The effects of the measure depend on the future choices of state and local government entities and are highly uncertain.



YES on Measure 16



NO on Measure 16

17 STATE MEASURE 17

Vote **YES** or **NO**

RESTORES RIGHT TO VOTE AFTER COMPLETION OF PRISON TERM. LEGISLATIVE CONSTITUTIONAL AMENDMENT. Restores voting rights upon completion of prison term to persons who have been disqualified from voting while serving a prison term. Fiscal Impact: Annual county costs, likely in the hundreds of thousands of dollars statewide, for voter registration and ballot materials. One-time state costs, likely in the hundreds of thousands of dollars, for voter registration cards and systems.



YES on Measure 17



NO on Measure 17

18 STATE MEASURE 18

Vote **YES** or **NO**

AMENDS CALIFORNIA CONSTITUTION TO PERMIT 17-YEAR-OLDS TO VOTE IN PRIMARY AND SPECIAL ELECTIONS IF THEY WILL TURN 18 BY THE NEXT GENERAL ELECTION AND BE OTHERWISE ELIGIBLE TO VOTE. LEGISLATIVE CONSTITUTIONAL AMENDMENT. Fiscal Impact: Increased statewide county costs likely between several hundreds of thousands of dollars and \$1 million every two years. Increased one-time costs to the state of hundreds of thousands of dollars.



YES on Measure 18



NO on Measure 18

Continue voting on next page



Sample Ballot

General Election
November 3, 2020

STATE

19 STATE MEASURE 19

Vote YES or NO

CHANGES CERTAIN PROPERTY TAX RULES. LEGISLATIVE CONSTITUTIONAL AMENDMENT.

Allows homeowners who are over 55, disabled, or wildfire/disaster victims to transfer primary residence's tax base to replacement residence. Changes taxation of family-property transfers. Establishes fire protection services fund. Fiscal Impact: Local governments could gain tens of millions of dollars of property tax revenue per year, probably growing over time to a few hundred million dollars per year. Schools could receive similar property tax gains.

☐ YES on Measure 19

☐ NO on Measure 19

20 STATE MEASURE 20

Vote YES or NO

RESTRICTS PAROLE FOR CERTAIN OFFENSES CURRENTLY CONSIDERED TO BE NON-VIOLENT. AUTHORIZES FELONY SENTENCES FOR CERTAIN OFFENSES CURRENTLY TREATED ONLY AS MISDEMEANORS. INITIATIVE STATUTE.

Limits access to parole program established for non-violent offenders who have completed the full term of their primary offense by eliminating eligibility for certain offenses. Fiscal Impact: Increase in state and local correctional, court, and law enforcement costs likely in the tens of millions of dollars annually, depending on implementation.

☐ YES on Measure 20

☐ NO on Measure 20

21 STATE MEASURE 21

Vote YES or NO

EXPANDS LOCAL GOVERNMENTS' AUTHORITY TO ENACT RENT CONTROL ON RESIDENTIAL PROPERTY. INITIATIVE STATUTE.

Allows local governments to establish rent control on residential properties over 15 years old. Local limits on rate increases may differ from statewide limit. Fiscal Impact: Overall, a potential reduction in state and local revenues in the high tens of millions of dollars per year over time. Depending on actions by local communities, revenue losses could be less or more.

☐ YES on Measure 21

☐ NO on Measure 21

22 STATE MEASURE 22

Vote YES or NO

EXEMPTS APP-BASED TRANSPORTATION AND DELIVERY COMPANIES FROM PROVIDING EMPLOYEE BENEFITS TO CERTAIN DRIVERS. INITIATIVE STATUTE.

Classifies app-based drivers as "independent contractors," instead of "employees," and provides independent-contractor drivers other compensation, unless certain criteria are met. Fiscal Impact: Minor increase in state income taxes paid by rideshare and delivery company drivers and investors.

☐ YES on Measure 22

☐ NO on Measure 22

23 STATE MEASURE 23

Vote YES or NO

ESTABLISHES STATE REQUIREMENTS FOR KIDNEY DIALYSIS CLINICS. REQUIRES ON-SITE MEDICAL PROFESSIONAL. INITIATIVE STATUTE.

Requires physician, nurse practitioner or physician assistant on site during dialysis treatment. Prohibits clinics from reducing services without state approval. Prohibits clinics from refusing to treat patients based on payment source. Fiscal Impact: Increased state and local government costs likely in the low tens of millions of dollars annually.

☐ YES on Measure 23

☐ NO on Measure 23

24 STATE MEASURE 24

Vote YES or NO

AMENDS CONSUMER PRIVACY LAWS. INITIATIVE STATUTE.

Permits consumers to: prevent businesses from sharing personal information, correct inaccurate personal information, and limit businesses' use of "sensitive personal information," including precise geolocation, race, ethnicity, and health information. Establishes California Privacy Protection Agency. Fiscal Impact: Increased annual state costs of at least \$10 million, but unlikely exceeding low tens of millions of dollars, to enforce expanded consumer privacy laws. Some costs would be offset by penalties for violating these laws.

☐ YES on Measure 24

☐ NO on Measure 24

25 STATE MEASURE 25

Vote YES or NO

REFERENDUM ON LAW THAT REPLACED MONEY BAIL WITH SYSTEM BASED ON PUBLIC SAFETY AND FLIGHT RISK.

A "Yes" vote approves, and a "No" vote rejects, law replacing money bail with system based on public safety and flight risk. Fiscal Impact: Increased costs possibly in mid hundreds of millions of dollars annually for a new process for release from jail prior to trial. Decreased county jail costs, possibly in high tens of millions of dollars annually.

☐ YES on Measure 25

☐ NO on Measure 25

! Continue voting on other side



Sample Ballot

General Election
November 3, 2020

Party-Nominated Offices

The party label accompanying the name of a candidate for party-nominated office on the general election ballot means that the candidate is the official nominee of the party shown.

NATIONAL ELECTION

PRESIDENT AND VICE PRESIDENT

Vote For **ONE** Party



JO JORGENSEN

for President

JEREMY "SPIKE" COHEN

for Vice President

Libertarian



JOSEPH R. BIDEN

for President

KAMALA D. HARRIS

for Vice President

Democratic



DONALD J. TRUMP

for President

MICHAEL R. PENCE

for Vice President

Republican



GLORIA LA RIVA

for President

SUNIL FREEMAN

for Vice President

Peace and Freedom



ROQUE "ROCKY" DE LA

FUENTE GUERRA

for President

KANYE OMARI WEST

for Vice President

American Independent



HOWIE HAWKINS

for President

ANGELA NICOLE WALKER

for Vice President

Green



Write-In Candidate

End of Ballot



Party Endorsements for Voter-Nominated Offices

United States Representative

Democratic

<u>District</u>	<u>Candidate Name</u>
23	Kim Mangone
25	Christy Smith
26	Julia Brownley
27	Judy Chu
28	Adam B. Schiff
29	Tony Cardenas
30	Brad Sherman
32	Grace F. Napolitano
33	Ted W. Lieu
34	Jimmy Gomez
35	Norma J. Torres
37	Karen Bass
38	Linda T. Sánchez
39	Gil Cisneros
40	Lucille Roybal-Allard
43	Maxine Waters
44	Nanette Diaz Barragan
47	Alan Lowenthal

Republican

<u>District</u>	<u>Candidate Name</u>
23	Kevin McCarthy
25	Mike Garcia
26	Ronda Baldwin-Kennedy
27	Johnny J. Nalbandian
28	Eric Early
30	Mark S. Reed
32	Joshua M. Scott
33	James P. Bradley
37	Errol Webber
39	Young Kim
43	Joe E. Collins III



Party Endorsements for Voter-Nominated Offices

United States Representative (Cont.)

American Independent

<u>District</u>	<u>Candidate Name</u>
25	Mike Garcia
27	Johnny J. Nalbandian
35	Mike Cargile
37	Errol Webber
47	John Briscoe

The Green, Libertarian and Peace and Freedom parties did not submit any endorsements for these offices.

State Senator

Democratic

<u>District</u>	<u>Candidate Name</u>
21	Kipp Mueller
23	Abigail Medina
25	Anthony J. Portantino
27	Henry Stern
29	Josh Newman
33	Lena Gonzalez
35	Steven Craig Bradford

Republican

<u>District</u>	<u>Candidate Name</u>
21	Scott Wilk
23	Rosilicie Ochoa Bogh
25	Kathleen Hazelton
27	Houman Salem
29	Ling Ling Chang

The American Independent, Green, Libertarian and Peace and Freedom parties did not submit any endorsements for these offices.

Member of the State Assembly

Democratic

<u>District</u>	<u>Candidate Name</u>
39	Luz Maria Rivas
41	Chris Holden
43	Laura Friedman
44	Jacqui Irwin
45	Jesse Gabriel
46	Adrin Nazarian
48	Blanca E. Rubio



Party Endorsements for Voter-Nominated Offices

Member of the State Assembly (Cont.)

Democratic

<u>District</u>	<u>Candidate Name</u>
49	Ed Chau
50	Richard Bloom
51	Wendy Carrillo
52	Freddie Rodriguez
53	Miguel Santiago
54	Sydney Kamlager
55	Andrew E. Rodriguez
57	Lisa Calderon
58	Cristina Garcia
59	Reggie Jones-Sawyer
62	Autumn R. Burke
63	Anthony Rendon
64	Mike Anthony Gipson
66	Al Muratsuchi
70	Patrick O'Donnell

Republican

<u>District</u>	<u>Candidate Name</u>
36	Tom Lackey
38	Suzette Martinez Valladares
39	Ricardo Benitez
41	Robin A. Hvidston
43	Mike Graves
44	Denise Pedrow
49	Burton Brink
52	Toni Holle
55	Phillip Chen
57	Jessica Martinez
62	Robert A. Steele
70	David W. Thomas

The American Independent, Green, Libertarian and Peace and Freedom parties did not submit any endorsements for these offices.

Pursuant to Elections Code §13302(b) any qualified political party may submit to the county elections official a list of all candidates for voter-nominated office who will appear on any ballot in the county, and who have been endorsed by the party.



Campaign Finance

List of legislative candidates who agreed to voluntary spending limits.

Only candidates who voluntarily limit their campaign expenditures may submit a statement for inclusion in this booklet.

STATE SENATOR

Party Preference: American Independent

<u>District</u>	<u>Candidate Name</u>
35	Anthony Perry

Party Preference: Democratic

<u>District</u>	<u>Candidate Name</u>
25	Anthony J. Portantino
33	Lena Gonzalez
35	Steven Craig Bradford

Party Preference: Republican

<u>District</u>	<u>Candidate Name</u>
23	Rosilicie Ochoa Bogh
27	Houman Salem
29	Ling Ling Chang

MEMBER OF THE STATE ASSEMBLY

Party Preference: Democratic

<u>District</u>	<u>Candidate Name</u>
36	Steve Fox
39	Luz Maria Rivas
43	Laura Friedman
44	Jacqui Irwin
45	Jesse Gabriel
46	Lanira K. Murphy
46	Adrin Nazarian
48	Blanca E. Rubio
49	Ed Chau
50	Richard Bloom
50	Will Hess
51	Wendy Carrillo
53	Godfrey Santos Plata
53	Miguel Santiago
54	Tracy Bernard Jones
57	Lisa Calderon
58	Cristina Garcia
59	Efren Martinez
62	Autumn R. Burke
63	Maria D. Estrada
64	Mike Anthony Gipson
64	Fatima S. Iqbal-Zubair



Campaign Finance

List of legislative candidates who agreed to voluntary spending limits.

Only candidates who voluntarily limit their campaign expenditures may submit a statement for inclusion in this booklet.

MEMBER OF THE STATE ASSEMBLY (Cont.)

Party Preference: Green

<u>District</u>	<u>Candidate Name</u>
-----------------	-----------------------

58	Margaret Villa
----	----------------

Party Preference: Republican

<u>District</u>	<u>Candidate Name</u>
-----------------	-----------------------

38	Suzette Martinez Valladares
38	Lucie Lapointe Volotzky
39	Ricardo Benitez
41	Robin A. Hvidston
44	Denise Pedrow
45	Jeffi Girgenti
49	Burton Brink
52	Toni Holle
55	Phillip Chen
57	Jessica Martinez
66	Arthur C. Schaper
70	David W. Thomas



Candidate Statements & Measures

The following pages may contain Candidate Statements, and/or Ballot Measure Analyses, Arguments or Rebuttals.

Candidates for local offices have the option of including a statement, for which they pay a fee, unless the governing body pays the fee.

In compliance with the law, only English and Spanish language Candidate Statements are included in this booklet. Each candidate that submitted a Spanish language Candidate Statement has paid an additional fee.

Candidate Statements, Arguments or Rebuttals In Favor, or/and Against Ballot Measures are not edited or verified for accuracy by any elections officials.

Arguments and/or Rebuttals are the opinions of the authors.

Information about State Measures is included in the 8.5" X 11" Official Voter Information Guide, which is mailed separately to registered voters by the Office of the Secretary of State.



Candidate Statements & Measures

STATEMENT OF TIMOTHY BURESH CANDIDATE FOR MEMBER OF THE CITY COUNCIL

ROLLING HILLS ESTATES CITY GENERAL MUNICIPAL ELECTION

Occupation: Civil Engineer

Rolling Hills Estates is special - beautiful, distinct neighborhoods, quiet streets, a relaxed community spirit, a semi-rural oasis in Los Angeles. I want to preserve the unique community that is Rolling Hills Estates while accommodating what the future brings us.

Challenges to preserving our City's character I will address include:

- State mandates to increase density and phase out single-family neighborhoods
- Reduced State funding and sales tax funding for the City for the next several years
- Maintaining an aging 50+ year old infrastructure

As time changes, our City must look at new ways to address issues, including:

- Tighter control of third party providers to improve services and reduce costs
- High-risk fire zones
- Greater oversight of house flipping abuses
- Better support and coordinated improvements to attract and grow local business whether at home or in offices
- Building and expanding community partnerships with the other cities on the Hill, our school district, our library district and others to further our common interests

This is our home where we are raising a family, located our business, and plan to live for a long time. I bring over 40 years of experience as a corporate and government executive who understands how to get things done.

STATEMENT OF BRIDGET K. CARMAN CANDIDATE FOR MEMBER OF THE CITY COUNCIL

ROLLING HILLS ESTATES CITY GENERAL MUNICIPAL ELECTION

Occupation: Planning Commissioner/Businesswoman

Planning Commission Chair/Regional Transportation Administrator/Community Leader

In the 22 years my family has lived in Rolling Hills Estates, the citizenry has generously contributed to maintain RHE's unique character. My contributions are reflected by this partial list of my service to the City:

- RHE Planning Commission Chair (2020), 4 years
- Larga Vista HOA President, 11 years
- RHE Environmental Advisory Committee, 2 years
- General Plan Advisory Committee Member, ongoing
- PVUSD PTA Council 4th VP/Miraleste Intermediate School, 5 years
- Girl Scouts Volunteer, 8 years
- Art-At-Your-Fingertips Docent, 6 years

Professionally, I was recruited from college by TRW (now Northrup Grumman) to procure major satellite subsystems, and currently work for a regional transportation agency awarding multi-million construction and rail vehicle contracts. This public/private experience, including post graduate study in landscape and urban planning, makes me qualified to represent you in the City's decision making, from a financial, land use, and public government perspective. Even more timely, is my prior involvement in school emergency preparedness, particularly inter-agency coordination.

As our community grapples with an epidemic, we are reminded of RHE's unique beauty and resiliency. I am committed to those objectives and would be honored to represent its residents on City Council.



Candidate Statements & Measures

STATEMENT OF JEFFREY ROMANELLI

CANDIDATE FOR MEMBER OF THE CITY COUNCIL

ROLLING HILLS ESTATES CITY GENERAL MUNICIPAL ELECTION

Age: 63

Occupation: Retired Chief Engineer

As a candidate for RHE City Council, I bring the necessary skills and public service experience to listen, debate and vote on issues that come before the Council, while making decisions in the best interest of the City and its constituents.

I am a native Californian, growing up in Orange County, attending Fullerton HS and graduating from California Polytechnic State University San Luis Obispo with a BS in Aeronautical Engineering. My wife Amy and I have enjoyed living in Rolling Hills Estates for 16 years.

I retired from The Boeing Company after a 34-year career having held positions of increasing leadership including Project Engineer, Program Manager and Chief Engineer. Subsequently, I am an active volunteer with my HOA serving as VP and Neighborhood Watch Captain. My service to RHE includes 3 terms and former Chair on the Parks & Activities Commission; 3 Subcommittees and regular participation in all City events. I volunteer with the LA County Sheriff Disaster Communication Service and hold an FCC General Class Amateur Radio license.

If elected, I will strive to strengthen the partnership between City Government and our HOAs and sustain our contract relationship with Law Enforcement. I ask for your vote on November 3.

STATEMENT OF VELVETH SCHMITZ CANDIDATE FOR MEMBER OF THE CITY COUNCIL

ROLLING HILLS ESTATES CITY GENERAL MUNICIPAL ELECTION

Occupation: Mayor

It has been my honor and privilege to serve on the City Council for these past five years, and currently as Mayor. Throughout my tenure I have been a prudent and responsible steward of our finances through our Audit and Budget committees, as a negotiator in service contracts, and through financial restructuring of debt. I have updated communication between city hall and our residents to be more transparent, effective and efficient through my work on strategic marketing and engagement of modern communication tools to better reach our residents. I have supported and helped to maintain our equestrian lifestyle and semi-rural community while chairing the Equestrian Committee, managing the updating of our riding rings and facilities throughout our city. As a member of the Chamber of Commerce Economic Development Committee I have supported our businesses and worked to help vitalize our commercial district. I'm vested in our future as the chair of our General Plan Committee currently creating the plan which will guide our city for years to come.

For over fourteen years I have volunteered for our city and will continue to ensure that its managed in a competent and fiscally sound manner, while being responsive to our residents.



Candidate Statements & Measures

STATEMENT OF BRUCE STECKEL CANDIDATE FOR MEMBER OF THE CITY COUNCIL

ROLLING HILLS ESTATES CITY GENERAL MUNICIPAL ELECTION

Occupation: Retired Bank Executive

I have a strong business and management background as an executive at two major banks. This has carried over to local projects like building the new Rolling Hills Country Club as President and representing the Strawberry Lane HOA for the last 18 years. In those capacities I have worked literally with all City departments and committees. I can begin contributing immediately to help keep our City on course.

In these challenging new times where losing our seasoned council members might mean loss of momentum. We are likely to face financial hurdles with declining revenue coupled with increased staff and vendor costs. We need to manage these expenses while exploring new revenue sources. Despite austerity concerns we need to continue a focus on increasing service levels and satisfaction by our residents.

We are proud to live and call this community home. Where we are safe and enjoy great neighborhoods, schools, parks, trails and nature. We also value our local shops, restaurants and services which need to be protected in this economy.

I studied engineering at UC Berkeley. I hold an MBA and MS in Finance from USC. When elected, I will work energetically to help our City prosper and deliver on its promise.

STATEMENT OF DEBBY STEGURA CANDIDATE FOR MEMBER OF THE CITY COUNCIL

ROLLING HILLS ESTATES CITY GENERAL MUNICIPAL ELECTION

Occupation: Retired Lawyer

For the past 30 years, I have lived in Rolling Hills Estates with my husband, Larry Vanden Bos, where we raised our three children. Throughout, I have been involved and invested in our community in various capacities.

I served 8 years as an elected trustee of the Palos Verdes Library District. I oversaw a budget slightly larger than our city's, negotiated with the city and developer on parking, and brought new services to PVLD.

I now serve on the city's General Plan Advisory Committee planning for the future of our city. I serve on our Environmental Advisory Committee, where we successfully advocated for the elimination of harmful herbicides in public spaces. I am a past president of Masongate HOA.

My vision for Rolling Hills Estates is:

- Preserve our rural lifestyle
- Reimagine and reinvigorate the business area of the city to boost services and revenue
- Enhance our open areas, trails, equestrian facilities and parks to provide outdoor activity for all ages
- Leverage our city's environmental leadership to benefit commercial and residential interests

My J.D. degree from University of Southern California law school and B.A. from UC Davis, and my past experience, prepare me to find sensible solutions. I would be honored to have your vote.

www.Debby4RHE.com



Candidate Statements & Measures

STATEMENT OF FRANK V. ZERUNYAN CANDIDATE FOR MEMBER OF THE CITY COUNCIL ROLLING HILLS ESTATES CITY GENERAL MUNICIPAL ELECTION

Age: 60

Occupation: Lawyer/Professor

Experience matters! I thought this would be my last term after my 17 years of service on the Rolling Hills Estates City Council. Unfortunately, the world, the country, our state and local governments are in fear and chaos with a pandemic, civil unrest, and unprecedented amount of state mandates on critical policy issues affecting us all in our city. With the encouragement of friends, and the support of colleagues and constituents, I decided to stay one more term to help guide the city during these turbulent times.

Relationships matter! Over these 17 years, I served on policy positions with regional and statewide organizations. I was elected 52nd President of California Contract Cities Association, leading seventy-plus cities, including RHE. I was also a gubernatorial appointee to the California Medical Board.

Trust matters! While my public record is well documented, I am particularly proud of consistently balanced budgets, our award-winning fiscal management, preservation of our financial reserves, environmental stewardship, and our efficient city operations. Finally, the conservation of our semi-rural equestrian character makes RHE a special place to live.

I hope I continue to be worthy of your support. Please VOTE to re-elect FRANK ZERUNYAN.

<https://priceschool.usc.edu/people/frank-zerunyan/>

STATEMENT OF JEFF FRANKEL CANDIDATE FOR GOVERNING BOARD MEMBER PALOS VERDES PENINSULA UNIFIED SCHOOL DISTRICT

Occupation: Business Consultant/Volunteer

FRANKEL is an independent business consultant that serves on the PVPUSD BUDGET ADVISORY COMMITTEE and is VICE CHAIRMAN OF THE CITIZENS OVERSIGHT COMMITTEE FOR MEASURE M. Frankel has lived in Palos Verdes for over 15 years and has one adorable special needs daughter in the district.

FISCAL DISCIPLINE:

As a member of the BUDGET ADVISORY COMMITTEE, Frankel understands the district's finances and is committed to maintaining balance budgets as achieved in 2019 and 2020.

At major companies, Frankel has executed budgets in excess of 100 million dollars. Frankel's knowledge and experience are critical to address the needs of the District.

Frankel worked with a team who turned a near bankrupt Shark/Ninja appliance company into a profitable powerhouse.

STUDENTS DESERVE TO REACH THEIR POTENTIAL:

Develop specialized instruction for our GATE students.

Increase study skills & executive functioning support for our struggling students.

The District's expectations must be raised in order for our special education students to have reasonable challenges and achieve best outcomes.

LIFE LONG LEARNING:

Increase adult education offerings.

Invite our distinguished retirees into classrooms to assist educators and mentor students.



Candidate Statements & Measures

STATEMENT OF AURA IMBARUS CANDIDATE FOR GOVERNING BOARD MEMBER

**PALOS VERDES PENINSULA UNIFIED SCHOOL
DISTRICT**

Age: 49

Occupation: Educator

Aura Imbarus, Ph.D. is an energetic educator, who has been serving in public education at the K-12 and college level for 22 years. Aura has a doctorate (cum laude) in World Humanities from Lucian Blaga University, as well as a Master's degree in American and British Literature and a BA in Foreign Languages, TESOL, TEFL, CLAD and Reading credentials from UCLA and California State University LA. She is an immigrant of Romanian, Greek descent, who came to this country with 500 dollars in her pocket, a journey that has been immortalized in two books, *Out of the Transylvania Night* and *Conversations with the Past*.

A well-crafted educational system is the backbone of any advanced society and having local and international exposure to what great schooling is all about, my laser sharp focus is on the efficacy of learning and to address our growing problems such as the digression of standardized tests scores, financial deficits, facilities that are in dire need of improvement, and, last, but not least, crucial emotional and physical wellness, on top of a well-balanced, healthy and socially active student lifestyle, while being sensitive and providing alternatives for our most vulnerable ones.

STATEMENT OF LINDA D. REID CANDIDATE FOR GOVERNING BOARD MEMBER

**PALOS VERDES PENINSULA UNIFIED SCHOOL
DISTRICT**

Occupation: Incumbent

Re-elect Linda Reid.

I have served PVPUSD for the last 6 years as a Board member. I am a non-partisan voice of reason and consensus builder who is not afraid to ask difficult questions and speak out on behalf of our diverse students. I have voted on budget cuts, expanding high-level academic programs, serving our special education community, and hiring a strong superintendent.

I first became involved as a parent with finance and communication expertise, ridding PVPUSD of ineffective administrators, and then bringing to the district's attention problems with math curriculum. As a board member, I devote countless hours to studying our budget, and to making independent decisions. I am not supported by either side of the political aisle, but by PVPUSD families and alumni families who value education. I have served our community with humility, accountability and courage as an engaged volunteer public servant.

Qualifications:

PVPUSD Board of Education, 2015-20. Board President 2018-19

BA Communication, BS Biology, Stanford University, 1988
MBA, USC, 1993

KNOWLEDGE: College Admissions Advisor. I know what it takes for students to be competitive.

INVOLVEMENT: PTA Board 2006-14, Golden Oak Award 2020. Cross Country team parent at high school and middle school.

Parent of 2 PVPUSD graduates.



Candidate Statements & Measures

STATEMENT OF ANDRA HOFFMAN CANDIDATE FOR MEMBER, BOARD OF TRUSTEES,

Seat 1

LOS ANGELES COMMUNITY COLLEGE DISTRICT

Occupation: LA Community College
Trustee/Professor/Director of Career Services

"Professors at our community colleges reviewed the qualifications of the candidates and voted to support Andra Hoffman for re-election to the Board of Trustees. She is smart, honest, ethical. A tireless worker with integrity."

- **Joanne Waddell, President, L.A. College Faculty Guild**

"Andra Hoffman is a highly-honored professor of American and California Government. She was head of the teacher training and Welfare to Work Programs."

- **Brian Patrick Walsh, Professor, Pierce College**
- **Ruby Christian-Brougham, Professor, Valley College**

"Andra Hoffman wrote the resolution to protect DACA Students. She led the successful drive for Dream Resource Centers."

- **Dr. Alfred Herrera, Director, UCLA Center for Community College Partnership**

"Andra Hoffman supported additional resources for the district's first African American Outreach Initiative."

- **Dr. Thomas Dawkins, President, Black Faculty/Staff Assn.**

"Andra Hoffman delivers for students. We worked together closely to provide two years free community college so students can complete their education with no debt."

- **Assemblymember Miguel Santiago, Assembly Committee on Higher Education**

"Andra Hoffman's leadership increased opportunities for training nurses, firefighters, and early childhood educators."

- **Jeff Freitas, President, California Federation of Teachers**

"Andra Hoffman's common-sense plan allowed students to safely continue their education during the COVID19 pandemic."

- **Kathy Vo, Professor of Nursing, Harbor College**

"Andra Hoffman's leadership helped many students complete the education to become U.S. citizens. I've worked closely with her and trust her."

- **Professor Felipe E. Agredano, East Los Angeles College**

STATEMENT OF DAVID VELA CANDIDATE FOR MEMBER, BOARD OF TRUSTEES,

Seat 3

LOS ANGELES COMMUNITY COLLEGE DISTRICT

Age: 45

Occupation: Trustee, Los Angeles Community College District

"Voters, my name is David Vela and I am a Member of the Board of Trustees for the Los Angeles Community College District, Seat 3 and I respectfully ask for your vote."

As a Trustee, I have championed key issues including: college promise, job training, increasing financial aid, student basic needs such as housing, jobs and access to food, implementing equity plans for diverse groups including African American and LGBTQ+ students.

My vision is to provide students cutting edge curriculum for today's job market and help them obtain their educational goals quicker and with less debt.

As a current Trustee, former community college instructor, County Supervisor's Deputy and School Board Member I have the experience to govern in times of crisis. As the recent pandemic plagued our district, I ensured that we converted to on-line courses to avoid the interruption of studies. There is a vast amount of work to be done and I would be honored to continue to serve you." -Trustee David Vela

-About Trustee David Vela-

Trustee David Vela is endorsed by the American Federation of Teachers and Building Trades. Trustee David Vela has led the charge so that the District meets its annual bond dollars expenditures resulting in state-of-the-art facilities for students and increasing the participation of minority, woman and LGBTQ+ certified businesses. As Chair of the Public Affairs and Legislative Committee, Mr. Vela advocated in Sacramento and D.C. to keep the District's funding intact and prevent lay-offs.

Trustee David Vela was raised by his single mother and is a proud native of Los Angeles. Vela received his Bachelors of Science Degree from the University of California, Los Angeles, and holds a Master's Degree in Public Policy with concentrations in Economics and International Relations from Pepperdine's School of Public Policy. David Vela lives in Montebello, CA.



Candidate Statements & Measures

STATEMENT OF NICHELLE M. HENDERSON

CANDIDATE FOR MEMBER, BOARD OF TRUSTEES,
Seat 5

LOS ANGELES COMMUNITY COLLEGE DISTRICT

Age: 51

Occupation: Education/College Teacher

I grew up in LA during a time of deep racial strife. Most young people of color didn't dare to dream of a college education. Regrettably, change has come slowly.

Our community colleges need a fighter. I am a lecture and academic faculty advisor at Cal State University, LA, a LA County Commissioner, and 30-year grassroots community activist who will work to make higher education a reality for all.

The nine campuses of the LA Community College District enroll over 230,000 students. Over 80% are students of color. More than half live in poverty. 20% have experienced homelessness. But 70% will fail to earn a two-year degree or transfer to a 4-year college. We must do better.

I will enact bold policies to strengthen our community college system for those who need it most:

- Increase outreach in underserved communities and promote greater diversity in hiring
- Enhance financial resources and services for students so they can focus on learning.
- Promote greater spending accountability and increase funding in the classroom.
- Work with high schools to better prepare students.
- Expand workforce training programs.
- Narrow the student performance gap and foster higher retention, transfer and graduation rates.

In addition to my work as a college educator and I hold leadership positions in the California Faculty Association.

I am honored by the endorsement of the Los Angeles College Faculty Guild, representing our teachers and professors.

Other endorsements include: State Sen. Holly J. Mitchell, Asm. members Sydney Kamlager-Dove and Al Muratsuchi, and five members of the LACCD Board.

It is time for a change that will truly put our students first.

Vote Nichelle Henderson on November 3!

STATEMENT OF MIKE FONG CANDIDATE FOR MEMBER, BOARD OF TRUSTEES,

Seat 7

LOS ANGELES COMMUNITY COLLEGE DISTRICT

Occupation: Member of the Board of Trustees, Los Angeles Community College District, Seat 7

During his time on our Community College Board, **Mike Fong** has created job-training programs and collaborated with Mayor Eric Garcetti on the Los Angeles College Promise program making two years of community college tuition-free expanding college access and opportunity for thousands of local students.

As Trustee, Mike led efforts to increase student success, expand dual enrollment programs, create high growth sector job training programs, and make the Colleges and District more responsive to the needs of students and the local community.

Now, Mike is running for re-election to serve as your **Member of the Board of Trustees** for the **Los Angeles Community College District, Seat 7** to serve as the effective and progressive advocate that we need embracing the hopes and aspirations of our students.

As our Trustee, Mike Fong will work to:

- Improve **workforce education** and **job training** programs.
- Increase **student success & dual enrollment** programs.
- Expand **diversity, equity, and inclusion** initiatives.
- Ensure every student has access to a **quality education**.

Mike Fong is endorsed by Congressman Ted Lieu, Senator Maria Elena Durazo, Councilmember Curren Price, Mayor Lindsey Horvath, along with local community leaders because he has a proven record of getting things done for students.

"I am running for re-election to the Los Angeles Community College District Board of Trustees Seat 7 to continue finding commonsense solutions to the problems we face embracing the hopes and aspirations of our students, families, and community. I would be honored to earn your vote." -**Mike Fong**

Questions? Call Mike at (818) 860-2496 or visit www.MikeFong.org



Candidate Statements & Measures

STATEMENT OF JAMES P. BRADLEY PARTY PREFERENCE: REPUBLICAN UNITED STATES REPRESENTATIVE, 33rd DISTRICT

My name is James P. Bradley, I'm a 3rd generation veteran, I obtained my Masters in Finance, International Business and Policy and have over 30 years of senior executive management experience. I am standing for this office because I believe it is possible through action to change the world.

I will author a bill to address homelessness for Federal funds to guarantee working families through a tiered approach: first, last and security deposits with no credit check to afford housing. Conventional public policy designed to increase the supply of low-cost, no-frills housing, will create the breathing room to focus on helping the hardest cases.

I believe that by tackling student debt and enabling entrepreneurship by making the SBA into an incubator of great ideas for educated young people we can make the dreams of our young people our future a viable reality. I propose loan forgiveness for innovative new designs that will propel expanding industries and create the kind of jobs we all want. Rising wages and growing families are a baseline for any robust economy!

I have no time for angry populism and even angrier identity politics which pit Americans against Americans by serving up grievances, hatreds, and non-negotiable demands that fail to address positive, redeemable and principled action.

I know how to establish hard targets for action with a strategic road map based on sound economic principles and knowledge, not party polarization. This district can thrive with good governance and principled action.

I, James Bradley, am that ACTION.

STATEMENT OF BOB NELSON CANDIDATE FOR MEMBER, BOARD OF TRUSTEES

PALOS VERDES LIBRARY DISTRICT

2020 is a critical election for our nation, our state, our community and especially you. This pamphlet must be long but is very important for you, the voter.

Regarding my candidacy, I'll be brief.

Library Trustees serve all 4 Palos Verdes cities. I live in Rancho Palos Verdes, for those who are not familiar with me, my past community service includes RPV's appointed Finance Advisory Committee and appointed Planning Commission.

With both I served my fellow 42,000 RPV citizens, shaping their 21st Century.

Now I am running to be your Library Trustee, to bring my experience to all 65,800 Palos Verdes citizens in their important education area of future library experiences.

As a Trustee, I assure you, my objective is to continue for you what our current staff and Trustees have brought so successfully to our community.

And, as you well know, our community, Palos Verdes adults and children, do greatly benefit from programs and offerings of their dynamic, professional Palos Verdes Libraries staff and Trustees.

Now, I ask for your vote so that I may join this team and help continue their traditions for you!

Many thanks for giving me this opportunity to serve!



Candidate Statements & Measures

STATEMENT OF RAY RANDALL CANDIDATE FOR MEMBER, BOARD OF TRUSTEES

PALOS VERDES LIBRARY DISTRICT

I am asking for your support to serve on the Palos Verdes Library Board of Trustees. I have served on the Board of the Peninsula Friends of the Library since January 2017 and desire to expand my role in enhancing the library experience for all members of the Palos Verdes community by serving on the Board of Trustees. We moved to Palos Verdes in 1983 and our children attended Palos Verdes schools. As an active advocate of Palos Verdes libraries and member of the Friends Board, I led the successful fundraising effort to build a future Teen Annex. Additionally, we have organized the Used Book program into a vital fundraising component for the Friends and thus the Library.

Having seen our wonderful library staff in action along with our amazing assets gives me insight regarding how to further increase our outreach to all members of our community. Our libraries provide a wealth of enrichment opportunities such as summer reading programs, e-books, young writer/artists recognition programs, free online language programs, and more!-I will work with the staff and you to make our libraries a true community center. Please help me help us with this endeavor.

STATEMENT OF ZOE UNNO CANDIDATE FOR MEMBER, BOARD OF TRUSTEES

PALOS VERDES LIBRARY DISTRICT

Occupation: Librarian

I am a candidate for the Board of Trustees for the Palos Verdes Library District to contribute my knowledge of libraries and enthusiasm to working with the board and library leadership to continue to provide the community with innovative and responsive library services, resources, and programming. As an intern with the Palos Verdes Library District, while earning my Masters in Library and Information Science, I had the opportunity to work with the dedicated staff and understand the tremendous commitment they have to the library district and the community; and, observe how the library functions. I have over 14 years of experience working in libraries where I managed budgets, personnel, and provided strategic direction to the library -- ensuring high-quality resources and services for the communities served. My background provides me with unique insight of libraries and will allow me to fully participate as an engaged and informed member of the board. In addition to the Masters in Library and Information Science, I possess a BS and PhD in Biology, which I have used to conduct research and teach during my career; thus, recognizing the important role of the library in the user's life.



Candidate Statements & Measures

STATEMENT OF GEORGE GASCÓN CANDIDATE FOR DISTRICT ATTORNEY

Endorsed By:

The Los Angeles Democratic Party
The Los Angeles Times
The Los Angeles Daily News
U.S. Senator Kamala Harris
U.S. Senator Bernie Sanders
U.S. Senator Elizabeth Warren
The Los Angeles League of Conservation Voters
Civil Rights and Black Lives Matter Leaders

Los Angeles deserves a new District Attorney who will make our neighborhoods safer, **hold police accountable** to the communities they serve, and reform our justice system so it works for everyone.

George Gascón has reduced violent crime in every leadership position he has held while pioneering reforms to reduce racial disparities and end mass incarceration.

George Gascón's family immigrated to Los Angeles and after serving in the Army he rose from an LAPD beat cop to Assistant Chief. Gavin Newsom appointed Gascón to serve as San Francisco Police Chief and District Attorney, where he reduced violent crime to historic lows, stood up for women, cracked down on sexual assault and fought to test every rape kit.

George Gascón is a national leader in the fight for criminal justice reform. Gascón prosecuted over 30 cops for excessive force and misconduct, led investigations exposing racist police and created California's first unit to independently investigate officer misconduct.

GEORGE GASCÓN DOES NOT TAKE ANY MONEY FROM POLICE UNIONS and will hold bad cops accountable. He is accountable to you, not police unions.

Together we can restore the promise of equal justice and ensure Los Angeles is a community we're all proud of.

www.GeorgeGascon.org

FULL TEXT OF BALLOT MEASURE J ORDINANCE NO. 2020-0040

An ordinance calling a special election to be held on November 3, 2020, throughout the County of Los Angeles for the purpose of voting upon an amendment to the Los Angeles County Charter and directing the consolidation of the election with the statewide general election to be held on the same day.

The Board of Supervisors of the County of Los Angeles ordains as follows:

SECTION 1. Call of Election and Purpose. A special election is hereby called, proclaimed and ordered to be held on November 3, 2020, for the purpose of voting upon a proposed amendment to the Charter of the County of Los Angeles.

SECTION 2. Resolution Establishing Form of Proposition. The exact form of the Proposition as it is to appear on the ballot and the complete text of the proposed amendment is as follows:

PROPOSED COUNTY CHARTER AMENDMENT.	
COMMUNITY INVESTMENT AND ALTERNATIVES TO INCARCERATION MINIMUM COUNTY BUDGET ALLOCATION.	YES
Shall the measure, annually allocating in the County's budget no less than ten percent (10%) of the County's locally generated unrestricted revenues in the general fund to address the disproportionate impact of racial injustice through community investment and alternatives to incarceration and prohibiting using those funds for carceral systems and law enforcement agencies as detailed in the ordinance adopting the proposed charter amendment, be adopted?	
	NO

PROPOSITION J

This Proposition shall become effective only if it is submitted to the voters at the election held on November 3, 2020 and is approved. The Charter amendment shall become operative on July 1, 2021.

First: Section 11 of Article III of the Charter of the County of Los Angeles is amended to read:

Section 11. It shall be the duty of the Board of Supervisors:



Candidate Statements & Measures

(1) To appoint all County officers other than elective officers, and all officers, assistants, deputies, clerks, attaches [14] and employees whose appointment is not provided for by this Charter. [15]

...

(8) To allocate, in compliance with all laws and regulations, the County's locally generated unrestricted revenues in the general fund as follows:

A. Set aside a baseline minimum threshold of at least ten percent (10%) of the County's locally generated unrestricted revenues in the general fund (Net County Cost), as determined annually in the budget process or as otherwise set forth in the County Code or regulations, to be allocated on an annual basis, after input from, among others, the public and County departments at a public hearing, for the following primary purposes:

i. Direct Community Investment.

1. Community-based youth development programs.
2. Job training and jobs to low-income residents focusing on jobs that support the implementation of the "Alternatives to Incarceration" workgroup recommendations as presented to the County Board of Supervisors on March 10, 2020, especially construction jobs for the expansion of affordable and supportive housing, restorative care villages, and a decentralized system of care.
3. Access to capital for small minority-owned businesses, with a focus on Black-owned businesses.
4. Rent assistance, housing vouchers and accompanying supportive services to those at-risk of losing their housing, or without stable housing.
5. Capital funding for transitional housing, affordable housing, supportive housing, and restorative care villages with priority for shovel-ready projects.

ii. Alternatives to Incarceration.

1. Community-based restorative justice programs.
2. Pre-trial non-custody services and treatment.
3. Community-based health services, health promotion, counseling, wellness and prevention programs, and mental health and substance use disorder services.
4. Non-custodial diversion and reentry programs, including housing and services.

B. The set aside shall not be used for any carceral system or law enforcement agencies, including the Los Angeles County Sheriff's Department, Los Angeles County District Attorney's Office, Los Angeles County Superior Courts, or Los Angeles County Probation Department, including any redistribution of funds through those entities. This restriction does not extend to State law requiring the County to fund court facilities and expenditures, including, but not limited to, the Trial Court Facilities Act of 2002 (2002 Senate Bill No. 1732) and Lockyer-Isenberg Trial Court Funding Act of 1997 (1997 Assembly Bill No. 233), other mandatory fines and fees, or any other County commitments to the extent required by law.

C. The unrestricted revenues that are set aside shall phase in over a three-year period, beginning July 1, 2021, and incrementally grow to the full set-aside by June 30, 2024, pursuant to the procedures codified in the County Budget Act in the Government Code.

D. The set aside cannot supplant monies otherwise allocated for the same categories listed in Subsection (8)(A), as defined and set forth in the County Code or regulations.

E. The Board of Supervisors shall establish an inclusive and transparent process on the allocation of funds set aside by this Subsection (8).

F. Notwithstanding this Subsection (8), the Board of Supervisors may, by a four-fifths vote, reduce the set-aside in the event of a fiscal emergency, as declared by the Board of Supervisors, that threatens the County's ability to fund mandated programs.

Second: In the event that the amendment to the Charter of Los Angeles County contained in this Proposition is rendered inoperative because of the actions of any court, legislative or other body, or for any other reason, the provisions of the County Charter in effect on November 3, 2020, shall remain in full force and effect.

Third: If any section, subsection, subdivision, paragraph, sentence, clause, phrase, or word of this Proposition is for any reason held to be invalid or unenforceable, such invalidity or unenforceability shall not affect the validity or enforceability of the remaining sections, subsections, subdivisions, paragraphs, sentences, clauses, phrases, or words of this amendment to Section 11 of Article III of the Charter. The voters of the County of Los Angeles declare that they would have independently adopted each section, subsection, subdivision, paragraph, sentence, clause, phrase, or word of this Proposition irrespective of the fact that any one or more other sections, subsections,



Candidate Statements & Measures

subdivisions, paragraphs, sentences, clauses, phrases, or words of this amendment to Section 11 of Article III is declared invalid or unenforceable.

SECTION 3. Consolidation. The special election shall be consolidated with the statewide general election to be held on Tuesday, November 3, 2020. The Proposition shall be placed upon the same ballot as that provided for the general election. The precincts, polling places, or vote centers, and precinct board members shall be the same as provided for the statewide general election.

SECTION 4. Proclamation. Pursuant to section 12001 of the Elections Code, the Board of Supervisors of the County of Los Angeles hereby PROCLAIMS that a special countywide election shall be held on Tuesday, November 3, 2020, to vote upon the Charter Amendment described in Section 2 of this Ordinance.

SECTION 5. Effective Date. Pursuant to Section 9141 of the Elections Code and Section 25123 of the Government Code, this Ordinance shall take effect upon the adoption thereof.

SECTION 6. Authority. This Ordinance is adopted pursuant to sections 23720, 23730, and 23731 of the Government Code, and sections 9141, 10402, 10403, and 12001 of the Elections Code.

SECTION 7. Publication. This Ordinance shall be published once before the expiration of 15 days after its passage in a daily newspaper of general circulation, printed, published and circulated in the County of Los Angeles pursuant to Government Code section 25124.

The Executive Officer-Clerk of the Board of Supervisors is ordered to file a copy of this Ordinance with the Registrar-Recorder at least 88 days prior to the day of the election.

IMPARTIAL ANALYSIS OF MEASURE

J

By Mary C. Wickham, County Counsel

Measure J is a proposed charter amendment placed on the ballot by the Los Angeles County Board of Supervisors ("Board"). If approved by the voters, the measure would implement an ordinance amending Section 11 of Article III of the Charter of the County of Los Angeles ("County").

The measure would set aside at least ten percent (10%) of the County's locally generated unrestricted revenues in the general fund, as determined annually in the budget process or as set forth in the County's Code or regulations, to be annually allocated towards the following primary purposes:

- Direct Community Investment, including: community-based youth development programs; job training and jobs to low-income residents; access to capital for small minority-owned businesses; rent assistance, housing vouchers and supportive services to those at-risk of losing their housing or without stable housing; capital funding for transitional housing, affordable housing, supportive housing and restorative care villages; and,
- Alternatives to Incarceration, including: community-based restorative justice programs; pre-trial non-custody services and treatment; community-based health services, such as counseling, wellness and prevention programs, mental health and substance use disorder services; and non-custodial diversion and reentry programs.

The set-aside revenues cannot replace monies otherwise allocated for the foregoing categories as set forth in the County's Code or regulations.

The measure would prohibit the set-aside revenues from being used for any carceral system or law enforcement agencies, including the County's Sheriff's Department, District Attorney, Probation Department, or the Los Angeles County Superior Courts, and would prevent redistribution of funds through those entities. This prohibition would not extend to court facilities and expenditures required pursuant to State law, including the Trial Court Facilities Act of 2002, the Lockyer-Isenberg Trial Court Funding Act of 1997, other mandatory fines and fees, or any other County commitments required by law.

The measure would enable set-aside revenues to phase in over a three-year period beginning on July 1, 2021, to the full set-aside amount by June 30, 2024. The measure requires the Board to establish an inclusive and transparent process for the allocation of the set-aside funds.



Candidate Statements & Measures

While the measure, if approved by the voters, may be repealed only by a subsequent vote of the electorate on an amendment to the Los Angeles County Charter, the Board may, by a four-fifths vote, reduce the set-aside in the event of a declared fiscal emergency that threatens the County's ability to fund mandated programs.

The measure requires a majority vote for passage.

ARGUMENT IN FAVOR OF MEASURE

J

Vote YES on Measure J to address the disproportionate impact of racial injustice by prioritizing health, housing, youth development and jobs in low-income and underserved communities—with a particular focus on Black, Brown, and low-income communities.

Vote YES on Measure J to make sure that a minimum of 10% of EXISTING local county revenue is guaranteed to be invested in community safety, housing stability, and care.

Vote YES on Measure J because it is clear that now is the moment to re-imagine L.A. County and make sure our county government budget reflects our shared values and priorities.

Vote YES on Measure J to:

- Increase community based counseling and mental health services
- Prioritize restorative justice programs
- Expand job training and placement support
- Create housing that is affordable to working people
- Support small businesses
- Scale up mentoring and youth development programs

Vote YES to shift resources from the criminal justice system to programs proven to address the root causes of crime. Incarceration and punishment are ineffective at treating poverty, mental illness, and a lack of housing.

Vote YES on Measure J because it is fiscally responsible and holds our elected leaders accountable. This is NOT a new tax--instead it will gradually and responsibly phase in the 10% budget set aside of existing local revenues over a four-year period. The funding set aside could be paused by the Board of Supervisors in a fiscal emergency. The measure promotes transparency by requiring an annual budgeting process that is flexible, but with a clear framework of eligible and non-eligible uses.

In these unprecedented times, we need real, meaningful change. Vote YES on Measure J to prioritize health, housing, and economic investment in communities across L.A. County.

ELISE BUIK

President & CEO, United Way of Greater L.A.

PATRISSE CULLORS

Chair, Reform L.A. Jails



Candidate Statements & Measures

HECTOR VILLAGRA

Executive Director, ACLU of Southern California

DAN LANGFORD

Executive Secretary-Treasurer and CEO,
SW Regional Council of Carpenters

ISAAC BRYAN

Director of Public Policy, UCLA Ralph J. Bunche
Center for African American Studies

REBUTTAL TO ARGUMENT IN FAVOR OF MEASURE J

**VOTE NO on MEASURE J – the \$500,000,000.00
essential services cut.**

Measure J fails to solve racial injustice.

— Measure J asks voters to "Re-imagine LA" where racial injustice will somehow be fixed by PERMANENTLY cutting nearly \$500,000,000.00 from essential services provided by the county's emergency response workers, nurses, 911 operators, social workers, and more.

— Measure J PERMANENTLY diverts nearly \$500,000,000.00 to unspecified programs that sound politically appealing today, but cannot be effectively implemented by County Supervisors.

Measure J hurts the people they say they're trying to help.

— Many of the people and communities who need additional investments to succeed in today's difficult economy would lose nearly half a billion dollars in resources under Measure J.

— Workers who provide essential county services more often come from and serve communities of color. Measure J PERMANENTLY shifts nearly \$500,000,000.00 away from those essential services and jobs into growing the government bureaucracy.

**Measure J PERMANENTLY diverts nearly
\$500,000,000.00 into the hands of county politicians
who keep failing us.**

— Voters gave County Supervisors millions of dollars to fix homelessness. The crisis has only gotten worse.

— Voters entrusted County Supervisors to help us get through the COVID-19 health crisis. LA County has the most infections and deaths in California while more people face unemployment as businesses shutter.

**County Supervisors keep failing to solve the crises
threatening our safety and well-being right now.**

**Why would we PERMANENTLY give County Supervisors
\$500,000,000.00 to keep failing us on a whole new set of
unspecified programs?**

VOTE NO on MEASURE J.

More information at NoMeasureJ.com



Candidate Statements & Measures

DON KNABE

Los Angeles County Supervisor, Retired

LAMBERT ADOUKI

Long Beach Community Organizer

DAVID SIFUENTES

Retired Firefighter

RICHARD CLOSE

Sherman Oaks Homeowners Association President

KATHLEEN CADY

Children's Advocacy Center Co-Founder

ARGUMENT AGAINST MEASURE J

Measure J has good intentions, but the consequences will be painful.

Vote No on Measure J.

No on Measure J – the county is struggling just to provide existing services

- Measure J permanently diverts nearly \$500,000,000.00 away from essential workers and critical public services county residents already rely on to a broad wish list of unspecified programs county government isn't equipped to manage.
- The county is still struggling to help get us through the COVID-19 crisis and decrease homelessness.
- Permanently diverting hundreds of millions of dollars from essential services into a whole new set of unspecified programs during a health and economic crisis will hurt the people it's designed to help.

No on Measure J – puts the safety of our neighborhoods at risk

- Measure J permanently takes \$500,000,000.00 in funding away from where it is needed the most—emergency response workers, nurses, 911 operators, public safety officers, social workers, and other essential workers.

No on Measure J – big political promises and no explanation of consequences

- The Los Angeles Times called it a "bad idea" and a "poor substitute for careful study, deliberation, and decision making."
- Measure J is cloaked in progressive words and big political promises, but no plan to implement and no specific fiscal accountability to make sure the money is spent effectively.
- Four county politicians rushed Measure J to the ballot without assessing the consequences of how permanently diverting nearly half a billion dollars away from essential county services will harm our neighborhoods.

We all want more people in Los Angeles to succeed, but all Measure J actually does is permanently divert nearly \$500,000,000.00 away from essential county services into a whole new wish list of programs the county can't effectively manage.

Vote No on Measure J.

More information: ProtectEssentialWorkers.com



Candidate Statements & Measures

KATHRYN BARGER

Chair, Los Angeles County Board of Supervisors

DAVID SIFUENTES

Retired Firefighter

LAMBERT ADOUKI

Long Beach Community Organizer

MARIA BOWSA

Retired Registered Nurse

REBUTTAL TO ARGUMENT AGAINST MEASURE J

Vote Yes on Measure J

For far too long our underserved and marginalized communities across L.A. County have been left out and left behind, with fatal public health consequences.

Measure J will change this.

The lack of investment has driven higher levels of poverty and shorter life expectancy for Black, Brown and low-income people. The pandemic has made this inequity even more clear.

While voting YES on Measure J is about creating a more just and equitable future that reflects our shared values, the opponents of Measure J prefer to use fear tactics to maintain the broken status quo.

Over 100 organizations with a track record of fighting for justice, community investment, health and wellness say Yes on Measure J.

National Union of Healthcare Workers, Black Lives Matter L.A., Community Coalition, Frontline Wellness Network, UNITE HERE! Local 11, and many more have all called for bold and permanent action to improve public safety and prioritize our communities. Measure J does exactly that.

--YES on Measure J – Increases public safety by funding programs that proactively address and treat the root causes of crime.

--YES on Measure J – Increases public safety by funding mental health treatment and counseling.

--YES on Measure J – Ensures that at least 10% of EXISTING County funds are fairly dispersed through a transparent, inclusive process for impacted communities-- rather than being allocated through backroom deals to campaign contributors.

Re-Imagine L.A. County, vote YES on Measure J.

www.MeasureJforLA.com

BELTRAN CHOW, LCSW

Enriched Residential Services Program Coordinator

DAHLIA FERLITO, MPH

Health Educator

LIZ SUTTON, LCSW

Enriched Residential Services Program Manager



Candidate Statements & Measures

ANDREA PASQUINI
Registered Nurse



Election Information

You may obtain information about specific election services by calling toll free and selecting the option number shown for the service requested.

1-800-815-2666

Option 1 Vote Center information

Option 2 Voter registration

Request a Sample Ballot

Request a Vote by Mail ballot

Option 3 Multilingual services

Sample Ballot translations

Option 4 Election Information

Option 5 Voter fraud/report illegal activity

Option 7 To become a Vote Center worker

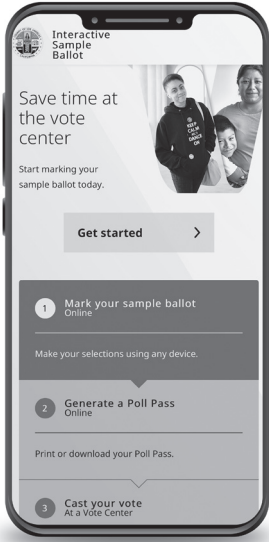
Campaign Financial Disclosure: (562) 462-2339

Campaign financial statement filing requirements for candidates, committees and office holders.

TDD (Hearing Impaired): (562) 462-2259



Quick Check-in at a Vote Center



Quick Tips to Speed Up Voting

- Use the Interactive Sample Ballot. Easily access and fill out your Sample Ballot online with your phone or computer and take your Poll Pass (QR Code) with you to the Vote Center. Access your Interactive Sample Ballot at **ISB.LAvote.net**
- Take the Quick Check-in Code on your Sample Ballot to any Vote Center. This allows the Election Workers to quickly find and print your official ballot. You can also access your Quick Check-in Code at **LAVote.net**

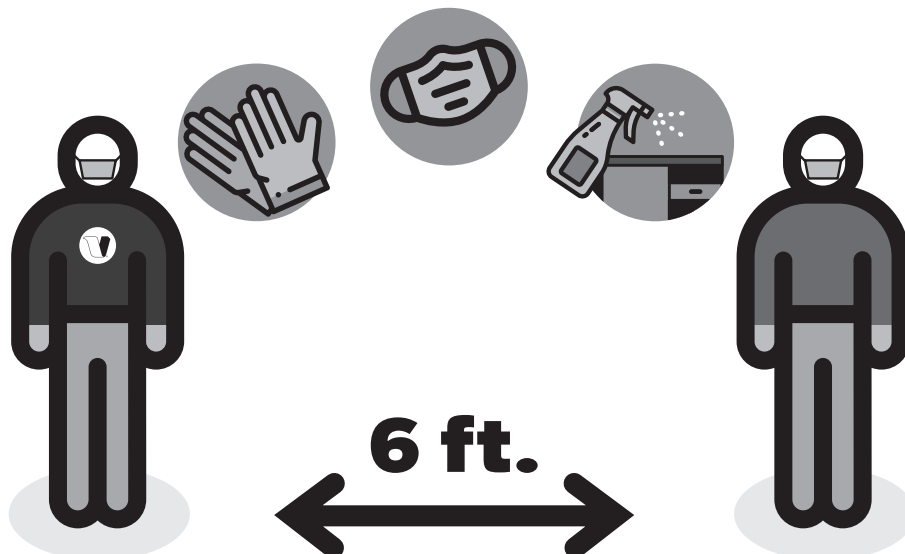
Quick Check-in Code on the back cover!



Voting at a Vote Center

Safe In-person Voting

In-person voting will be available to anyone who prefers to vote at a Vote Center. All Vote Centers will follow public health and safety guidelines to ensure a safe voting environment.





NONPROFIT ORG.
U.S. POSTAGE
PAID
COUNTY OF LOS
ANGELES REGISTRAR
RECORDER COUNTY
CLERK

**Detach and take your Quick Check-In Code
with you to any Vote Center in L.A. County.**



Detach

Vote Centers Near Your Residence

VOTE CENTERS OPEN:

October 30 - November 2: 10 AM - 7 PM

Election Day, November 3: 7 AM - 8 PM

**FULL LIST OF VOTE CENTERS
AND VOTING RESOURCES ON
[LAVOTE.NET](https://lavote.net)**